

## INTRODUCTION

The Airstream® Class I Biological Safety Cabinet offers user and environment protection when doing experiments with agents that are assigned under Biosafety Level 1.

This Class I biological safety cabinet is equipped with protective features such as the Isocide™ powder coat that inhibits microbial growth and optional UV lamp for decontamination.

It is also equipped with a UV Door which provides safety against UV light. The door is integrated with VHP injection port for connection to VHP/ HPV generator for easy decontamination.

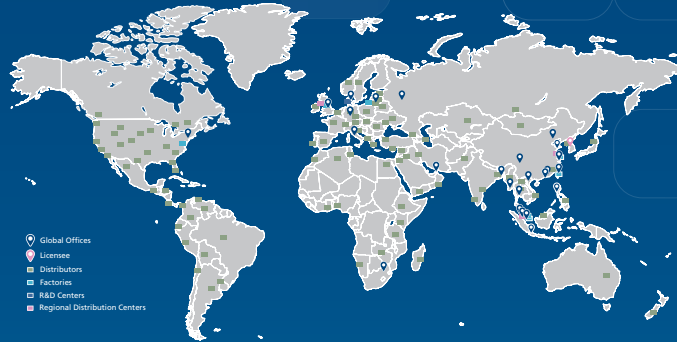
The cabinet is powered by an energy-efficient DC ECM motor offering 70% energy savings. Bearing the **EN 12469 certification** by the Public Health England (PHE), Airstream® Class I Biological Safety Cabinet is an essential component in your laboratory.

## Application

- Microbiological practices dealing with low to moderate risk biological agents.

## ESCO LIFESCIENCES GROUP

42 LOCATIONS IN 21 COUNTRIES ALL OVER THE WORLD



**ESCO**  
SCIENTIFIC

## Esco Class I Biological Safety Cabinet



Join us on Social Media and Download our Apps!



[www.escolifesciences.com](http://www.escolifesciences.com)

# Esco Class I Biological Safety Cabinet



Model: AC1-4E8



## KEY FEATURES:

- Compact design
- Energy-saving
- Suitable for BSL I
- Provides user and environment protection
- Optional secondary H14 or carbon filter
- Available sizes: 3, 4, 5 and 6 ft

## Construction

### Isocide™ Powder Coat

- Silver-ion impregnated powder coat
- Inhibit microbial growth to improve safety

### Hinged Window

- 90° opening for an easy workzone access
- 8 mm UV resistant polycarbonate window
- Gasket-surrounded window to provide airtight seal for better safety

### Work Top

- 1.2 mm (0.05") 18 gauge SS 304, 4B finish
- Spill-retaining work top design with a recessed central area contains accidental liquid spills

### Easy to Clean Back Wall

- Large back wall radius for easy cleaning
- With UV lamp

### Airflow Sensor

- Monitors real-time airflow for safety
- Alert the user if airflow is insufficient

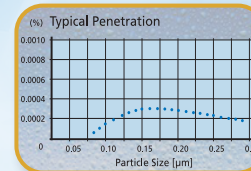
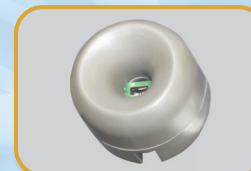
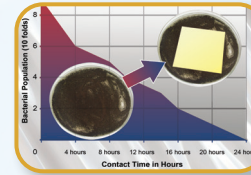
## Blower and Filtration

### H14 Filter

- 10x filtration efficiency of HEPA filter
- H14 Filter with efficiency of 99.999% between 0.1 to 0.3 microns

### Energy Efficient DC ECM Motor

- 70% energy savings from AC motor
- Stable airflow, despite building voltage fluctuations
- Standby mode to further reduce power consumption by 60%



## Control System

### Sentinel™ Gold Microprocessor Controller

- Displays all safety information on one screen
- Centered and angled down for easy reach & viewing



## OPTIONS AND ACCESSORIES



UV Door (with VHP in Port)



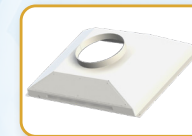
Germicidal UV Lamp



Service Fixtures



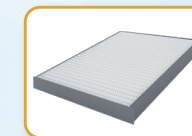
Electrical Outlet



Exhaust Ducting



Pre-filter



Optional Secondary Filter



IV Bars, with hooks



Support Stand